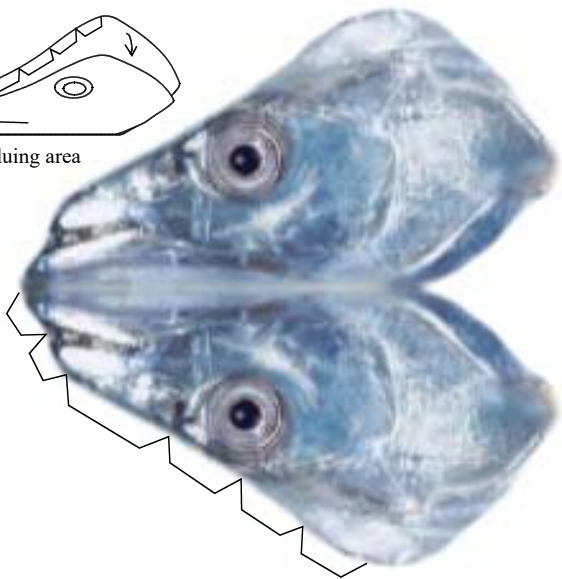


# Largehead hairtail *Trichiurus lepturus*

Difficulty level

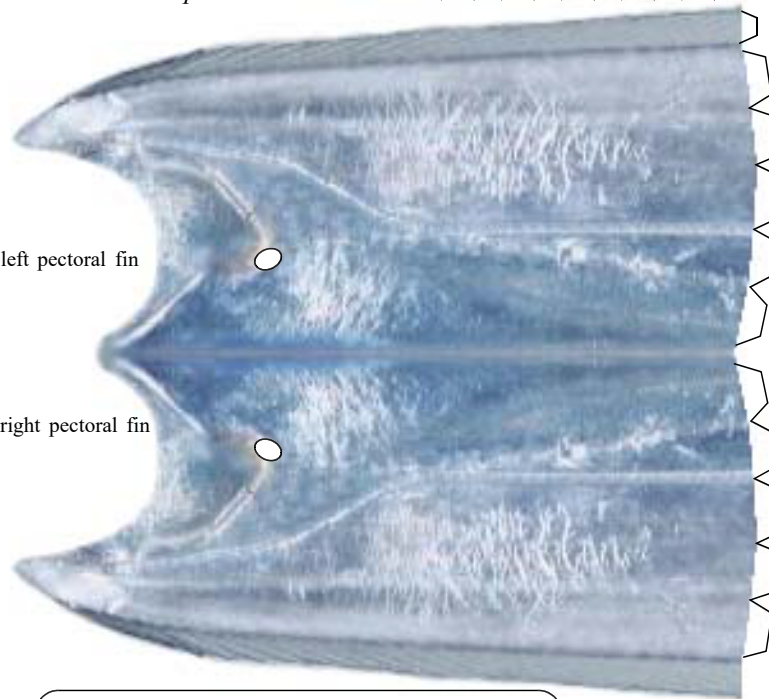


fold the gluing area and glue



left pectoral fin

right pectoral fin



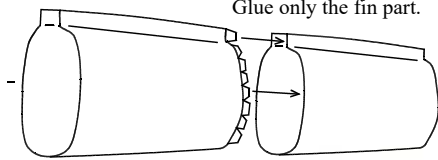
Let's make from the tail to the head !  
Make the head separately and glue it together at the end.  
Glue the head and body in two places, top and bottom.

right pectoral fin

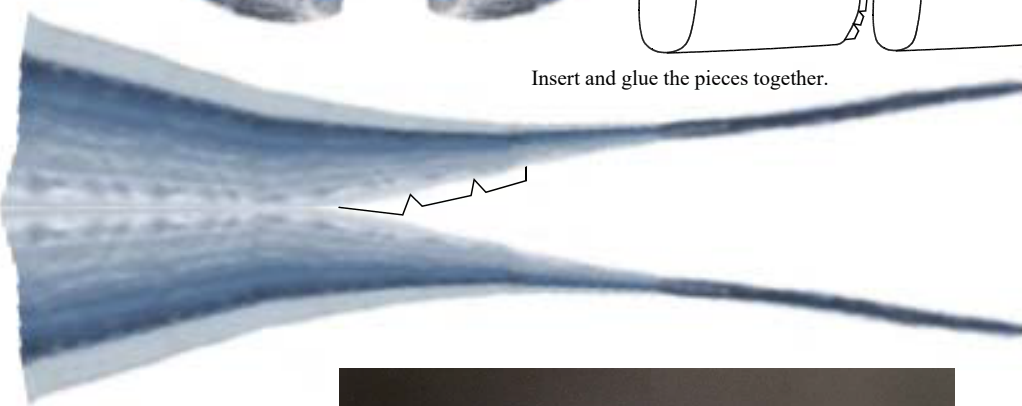
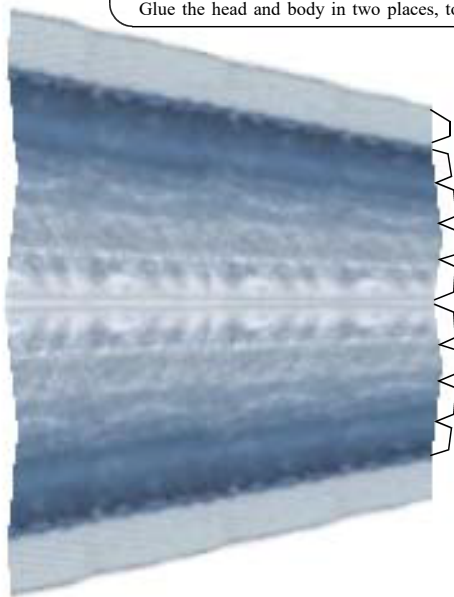
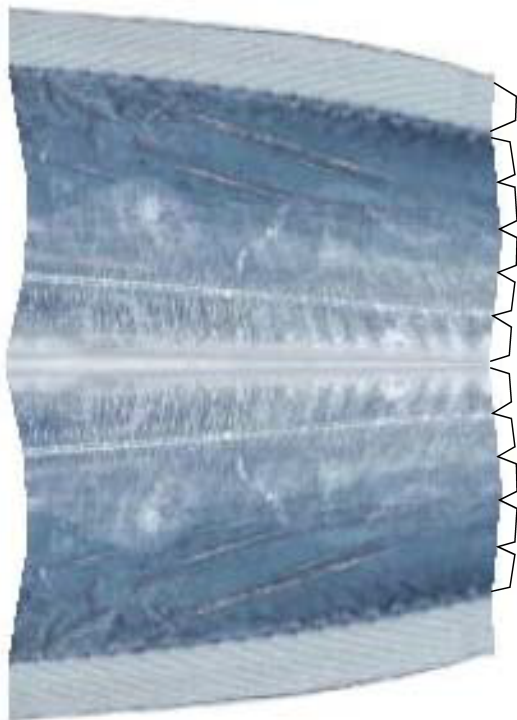
left pectoral fin

Make a crease at the border between the fin and body.  
Glue only the fin part.

mountain fold



Insert and glue the pieces together.



Completed photo

